



1126 Main St, PO Box 50  
Gresham WI 54128  
715-787-3244

## VILLAGE OF GRESHAM RESIDENTIAL 2019 RECYCLING NOTICE

**THIS IS A REMINDER THAT THE VILLAGE OF GRESHAM REQUIRES EVERYONE TO RECYCLE: PAPER, CARDBOARD, GLASS, PLASTIC, ALUMINUM, STEEL, FOOD AND BEVERAGE CONTAINERS, TIRES, YARD WASTE, APPLIANCES, MOTOR OIL, LEAD, ACID BATTERIES, AND ELECTRONICS.**

**RECYCLING MAY BE CO-MINGLED IN PAPER BAGS OR RECYCLING CONTAINER.**

- **GLASS:** Food and beverage bottles and jars empty, rinsed and caps removed. **DO NOT ACCEPT:** light bulbs or ceramics, china dishes, drinking glasses & window glass.
- **PLASTIC:** All plastic bottles, cups and containers, household bottles, jars and jugs, dairy containers and lids, product, bakery and deli containers and lids. Empty, rinse and replace caps and lids. **DO NOT ACCEPT:** Plastic bags, wrap or film, motor oil bottles and Styrofoam.
- **METAL:** Aluminum bottles and cans, steel and tin cans, empty aerosol cans. Empty and rinse. **DO NOT ACCEPT:** Aluminum pans or foil, empty paint cans and scrap metal.
- **PAPER:** Newspaper, inserts, cardboard, paperboard (food boxes), milk, juice, soup cartons, office, school paper, junk mail, catalogs, phonebooks, books and magazines. Shred paper in a paper bag and staple shut. Flatten and cut boxes to 2ft. by 2ft. **DO NOT ACCEPT:** Tissue paper and pet food bags

**ITEMS NOT BEING ACCEPTED** at this time: Styrofoam, Electronics, building materials, paint cans, ashes, grass/leaf rakings and oil filter.

Items that need to be taken in either to the Shawano Landfill or an authorized location: tires, motor oil, oil filters and batteries.

**GRASS AND LEAF RAKINGS** can be taken to the Village brush pit, by signing out a key at the Utility Office. No bags or garbage are accepted at this site, **leaves and brush only**. This option is regulated by our license and violations could cause us to lose this license. Please do your part to ensure that the brush drop off site remains open.

**GARBAGE** must be bagged in **CLEAR or WHITE** bags, garbage cans cannot be larger than 33 gallon. Garbage in a black bag will be tagged and left behind. Garbage must be placed by the curb by 6:00 A.M. every Tuesday.  
**DO NOT PUT BAGS ON SNOW BANKS, DURING THE WINTER MONTHS.**

**ELECTRONICS** can be dropped off at the Shawano Landfill or an authorized recycler. Electronics include: TV's microwaves, monitors, CPU's CD & DVD players keyboards, laptops, VCR's, typewriters, word processors, printers, etc. Call the Utility Office for dates and details of the Electronics Pick Up annually in the Village of Gresham.

**APPLIANCES WITH FREON** can be picked up by the road by paying a pick up charge at the utility office and getting a sticker to be placed on the item for pick up.

**LANDLORDS** are responsible to see that their tenants are informed of the recycling and garbage program in Gresham.  
**BUSINESS OWNERS MUST FOLLOW THESE GUIDELINES AND INFORM YOUR CONTRACTED SERVICE.**

Please do your part to keep our community clean and safe and help to reduce the cost to provide these services. If you have further questions please call the Gresham Utility Office at 715-787-3244 or 4 Seasons Disposal at 715-304-6028. For questions regarding drop off at the Shawano Landfill call 715-524-2230



# Curbside Recycling Guide

Place items loosely in your cart. No plastic bags!

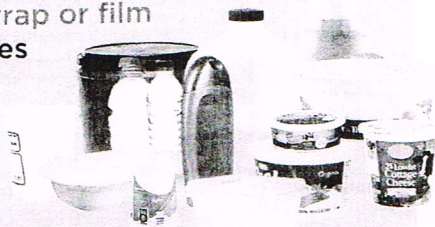
## Plastic

### ACCEPT:

- ALL plastic bottles, cups & containers
- Household bottles, jars & jugs
- Dairy containers & lids
- Produce, bakery & deli containers & lids

### DO NOT ACCEPT:

- Plastic bags, wrap or film
- Motor oil bottles
- Styrofoam



*empty, rinse and replace caps & lids*

## Paper

### ACCEPT:

- Newspapers & inserts
- Cardboard & paperboard (food boxes)
- Milk, juice & soup cartons
- Office & school paper
- Junk mail & catalogs
- Phonebooks, books & magazines

### DO NOT ACCEPT:

- Tissue paper
- Pet food bags



*shred paper in a paper bag & staple shut  
flatten & cut boxes to 2ft by 2ft*

## Metal

### ACCEPT:

- Aluminum bottles & cans
- Steel & tin cans
- Empty aerosol cans

### DO NOT ACCEPT:

- Aluminum pans or foil
- Empty paint cans
- Scrap metal



*empty & rinse*

## Glass

### ACCEPT:

- Food and beverage bottles & jars

### DO NOT ACCEPT:

- Window glass
- Ceramics, china
- Drinking glasses



*empty & rinse*

For COLLECTION Concerns & Information: Inland Service (920) 759-0501



[www.RecycleMoreOutagamie.org](http://www.RecycleMoreOutagamie.org)

